



# 6819MP-F

## AVAILABLE MOUNTING CONFIGURATIONS

6819MP-F FRAME MOUNT  
 6819MP-EM ENGINE MOUNT  
 6819MP-RP-F REDI-PRIME FRAME MOUNT  
 6819MP-RP-EM REDI-PRIME ENGINE MOUNT

## OPERATING LEVELS

<b>MIN FLOW</b>	750 GPM	170 m³/h
<b>MAX FLOW</b>	3800 GPM	860 m³/h
<b>DISCHARGE SIZE</b>	6"	150 mm
<b>SUCTION SIZE</b>	8"	200 mm
<b>SOLIDS HANDLING</b>	2"	51 mm
<b>MAX SPEED</b>	2100 RPM	2100 RPM
<b>SHUT-OFF HEAD</b>	620'	189 m
<b>BEP HEAD</b>	463'	141 m
<b>BEP FLOW</b>	2725 GPM	619 m³/h
<b>BEP PERCENT</b>	74%	74%



A typical picture of the pump is shown. Please contact KamalBlower Pump Company for further details. All information is approximate and for general guidance only.

PARTS	HYBRID	HIGH CHROME
<b>IMPELLER</b>	CHROME IRON	CHROME IRON
<b>VOLUTE</b>	DUCTILE IRON	CHROME IRON
<b>SHAFT</b>	17-4 P.H. STAINLESS STEEL	17-4 P.H. STAINLESS STEEL
<b>SHAFT SLEEVE</b>	416 STAINLESS STEEL CHR. PLATED	416 STAINLESS STEEL CHR. PLATED
<b>SUCTION COVER</b>	DUCTILE IRON	DUCTILE IRON
<b>BACKPLATE</b>	DUCTILE IRON	CHROME IRON
<b>WEAR PLATE</b>	CHROME IRON	CHROME IRON
<b>MECHANICAL SEAL</b>	TUNGSTEN CARBIDE VS. SILICON CARBIDE	TUNGSTEN CARBIDE VS. SILICON CARBIDE
<b>BEARING FRAME</b>	CAST IRON	CAST IRON
<b>O-RINGS</b>	VITON	VITON

The 6819MP pump is designed with KamalBlower's renowned quality and durability. It features a 6" discharge, 8" suction, and enclosed impeller. Available in Hybrid or High Chrome materials. KamalBlower's patented Cycloseal® design is standard, with a Type 2 single mechanical seal with Viton elastomers, stainless steel hardware and tungsten carbide vs. silicon carbide seal faces for abrasion resistance. Heavy-duty F18 bearing frame with double angular contact thrust bearing on frame-mount models.

- Flow rates up to 3,250 GPM / Heads up to 620'
- Redi-Prime® available for fully-automatic continuous priming
- RunDry™ option (Indefinite run dry capability)
- Heavy-duty construction
- Front adjustable wear plate
- Replaceable wear plates



AGRICULTURE



FOOD



INDUSTRIAL



MINING



MUNICIPAL



OIL &amp; GAS



REFRIGERATION



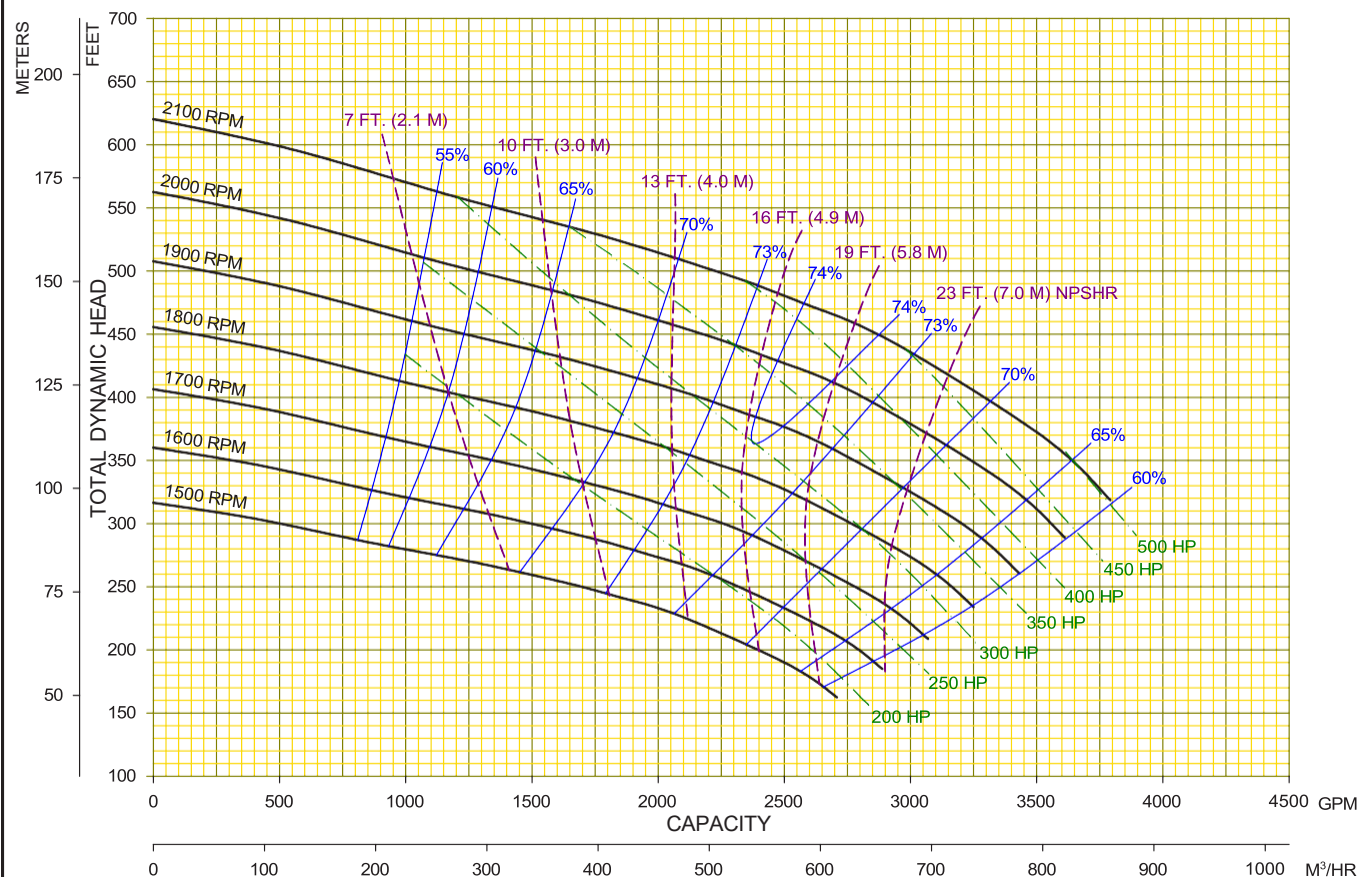
RENTAL



# 6819MP-F

Performances shown are for S.G. 1.0  
60°F water, frame mounted configuration  
with Cyclo seal. Other mounting styles or  
S.G. may require curve adjustments.

Speed	Impeller Dia.	Style	Volute	Solids Dia.	N <sub>s</sub>	Suction	Discharge	No. Vanes
VARIOUS	19.50"	ENCLOSED	SINGLE	2.00"	1090	8"	6"	2



KamalBlower Solutions LLC

03	12/31/15	AE	MODEL : 6819MP
00	06/17/13	---	TYPE : SOLIDS HANDLING

CURVE NO:	6819MPVA
-----------	----------