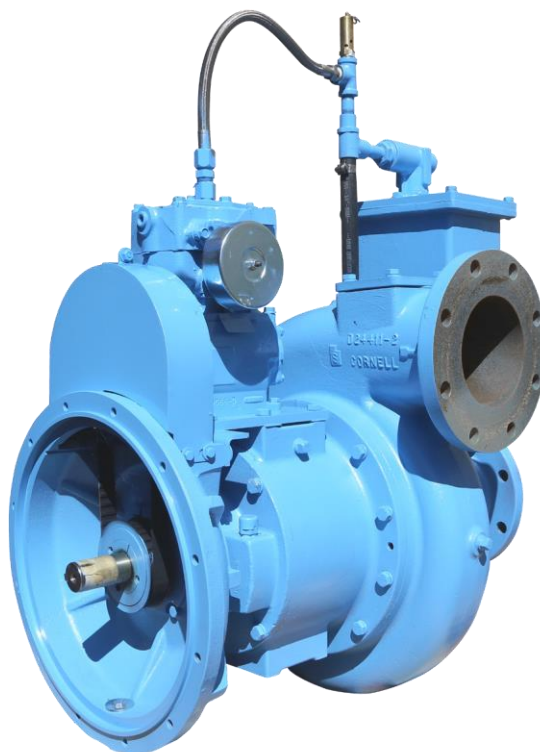


AVAILABLE MOUNTING CONFIGURATIONS

6612CP-EM ENGINE MOUNT

OPERATING LEVELS

MIN FLOW	150 GPM	34.5 m³/h
MAX FLOW	2360 GPM	536 m³/h
DISCHARGE SIZE	6"	152 mm
SUCTION SIZE	6"	152 mm
SOLIDS HANDLING	3"	76 mm
MAX SPEED	2000 RPM	2000 RPM
SHUT-OFF HEAD	184'	56 m
BEP HEAD	119'	36.3 m
BEP FLOW	1850 GPM	420 m³/h
BEP PERCENT	68%	68%



A typical picture of the pump is shown. Please contact KamalBlower Pump Company for further details. All information is approximate and for general guidance only.

PARTS	STANDARD MATERIAL (ALL IRON)
IMPELLER	DUCTILE IRON
VOLUTE	DUCTILE IRON
SHAFT	17-4 PH STAINLESS STEEL
SHAFT SLEEVE	303 STAINLESS STEEL
SUCTION COVER	CAST IRON
WEAR PLATE	MILD STEEL
SEAL HOUSING	CAST IRON
MECHANICAL SEAL	SILICON CARBIDE VS. SILICON CARBIDE
BEARING FRAME	DUCTILE IRON

The 6612CP pump is designed with KamalBlower's renowned quality and durability. It features a 6" discharge, 6" suction, and tangential volute and semi-open impeller. KamalBlower's patented Cycloseal® design is standard, with a Type 2 single mechanical seal with Viton elastomers, stainless steel hardware and silicon carbide vs. silicon carbide seal faces for abrasion resistance. Bearings are angular contact bearings on DE, and deep groove ball bearings on PE.

- Low cost, durable KamalBlower Quality
- Venturi Prime priming system
- Ideal for clear water and wastewater applications
- Heavy-duty bearing frame
- Two-year warranty



AGRICULTURE



FOOD



INDUSTRIAL



MINING



MUNICIPAL



OIL & GAS

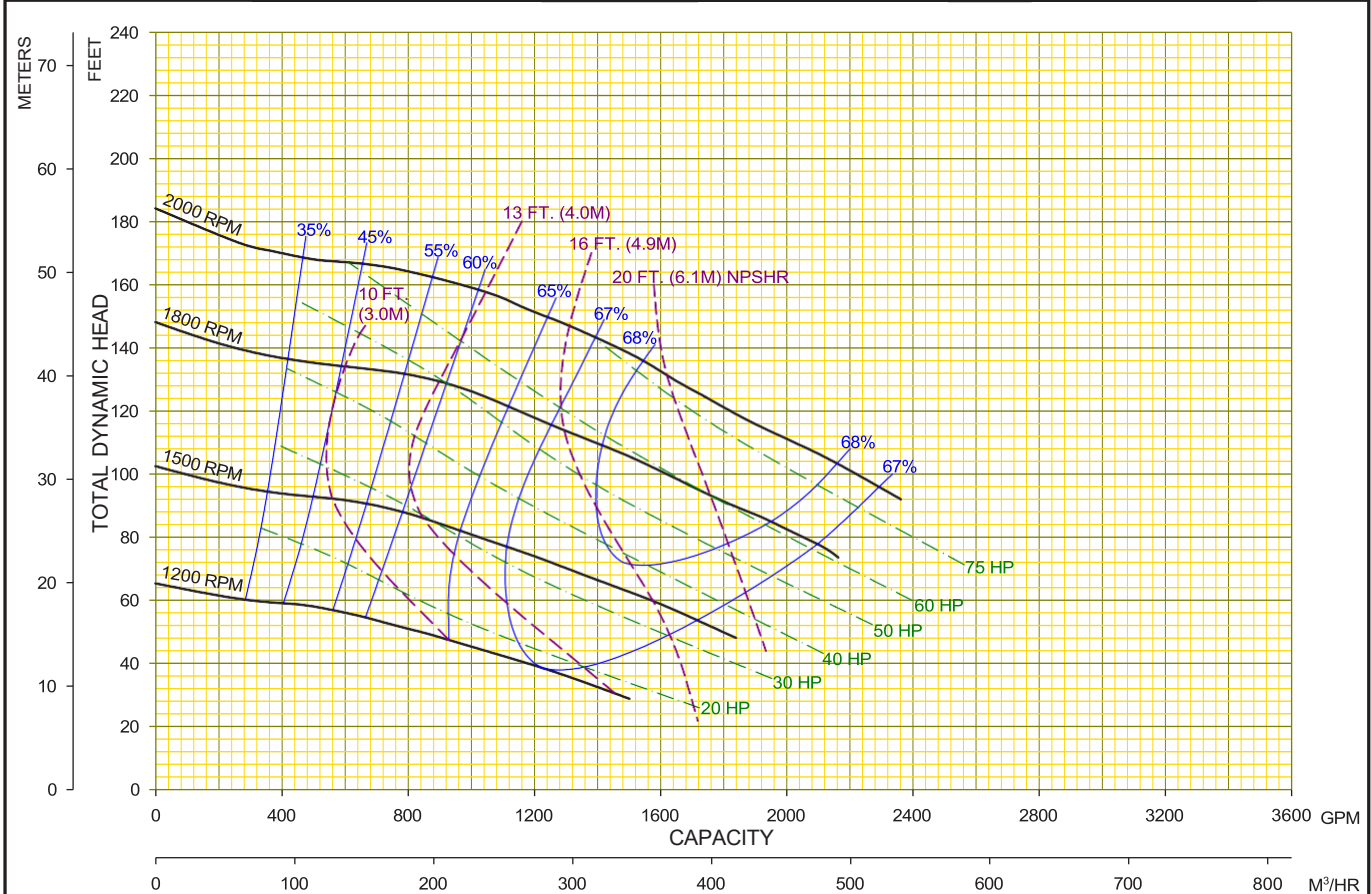


REFRIGERATION



RENTAL

Performances shown are for S.G. 1.0 60°F water, close-coupled configuration. Other mounting styles or S.G. may require curve adjustments.	Speed	Impeller Dia.	Style	Volute	Solids Dia.	N _s	Suction	Discharge	No. Vanes
	VARIOUS	12.38"	SEMI-OPEN	SINGLE	3"	2375	6"	6"	2



KamalBlower Solutions LLC	01	03/17/15	CTG	MODEL : 6612CP	CURVE NO: 6612CPVA
	00	11/24/14	BE	TYPE : SOLIDS HANDLING	