

**KAMAL BLOWER SOLUTIONS LLC****200 - 1000 GPM   Model 4NLHM   20 - 120 Feet TDH****STANDARD SPECIFICATION**

**Discharge** - 4 inch discharge

**Suction** - 4 inch suction

**Impeller** - Semi-open, 3 vane: handles 2.63" solids

**Volute** - Right and left hand tangential discharge, eight positions (twelve positions for F18, VF18, VC18 and engine mount pumps)

**Mechanical Seal or Traditional Packing** - Single type 2 tungsten silicon mechanical seal: Cycloseal® design, Run-Dry™ available

**Materials of Construction**

- Cast iron casing, cast iron impeller
- Other materials available

**MOUNTING OPTIONS**

- **Horizontal Close-Coupled**

Kamal Blower VM

- **Vertical Close-Coupled**

Kamal Blower VM

- **Frame Mount**

Kamal Blower F5

- **Engine Bracket**

Kamal Blower EM5 (SAE 1, 2, 3, 4)

- **Oil Filled Bearing Frame**

– Available

- **Redi-Prime® Self Priming System**

– Available

**AVAILABILITY**

- **Quick Ship**

– Finished Product Regularly Stocked  
(48 Hours)

- **Preferred Pump**

– Finished Components Regularly Stocked  
(10 business days)

- **Specialty Pump**

– Kamal Blower Pump Company will design and manufacture a variation of this pump specifically designed for your application

**FEATURES & BENEFITS**

- **Cornell's Tradition of Excellence:**

- **Highest quality products**
- **Experience**
  - Over 50 years in the centrifugal pump business
- **Optimum Hydraulics**
  - In house engineering staff and test lab facilities
- **Strong Local Dealer Support**
  - Our agricultural products are sold only through authorized dealerships
  - Dealerships provide full service to customers from sales to replacement parts
  - Dealers maintain and improve their knowledge at educational activities like Kamal Blower's "Pump School"

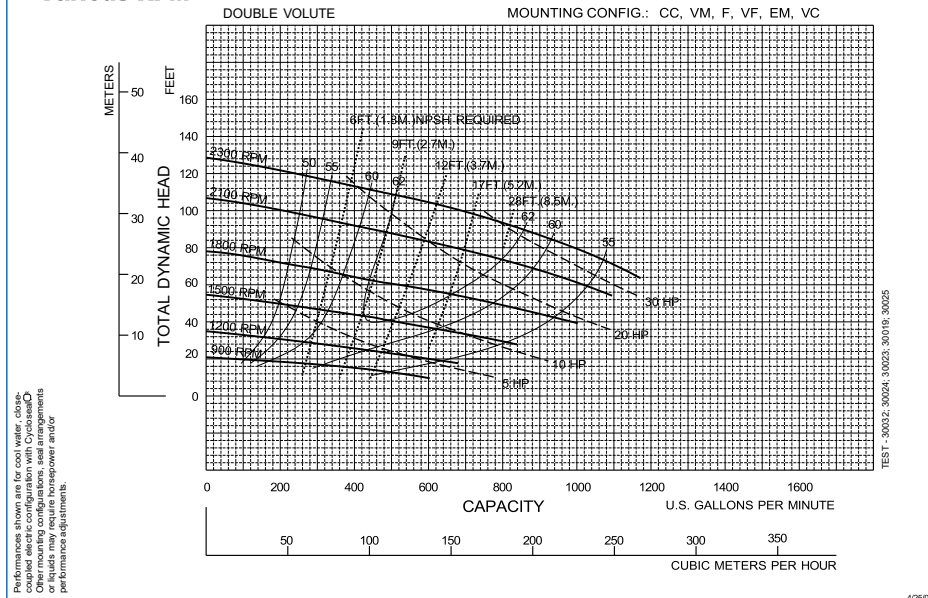
- **Exceptional Design:**

- **Efficiency**
  - Effectively converts energy into fluid flow and pressure
- **Long Product Life**
  - Thick walled castings
  - Heavy duty shafts
  - 20,000 hour bearings
  - Replaceable wear rings and shaft sleeves

# PERFORMANCE CURVES

## 4NLHM Various RPM

Speed	Impeller Dia.	Style	Solids Dia.	N <sub>S</sub>	Suction	Discharge	No. vanes
VARIOUS	8.25"	SEMI-OPEN	2.63"	1750	4"	4"	3



**Note:**  
Curves also  
available in  
1800 and  
1200 RPM

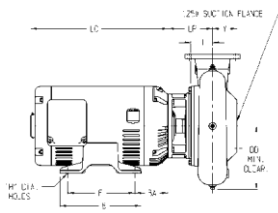


Figure 1

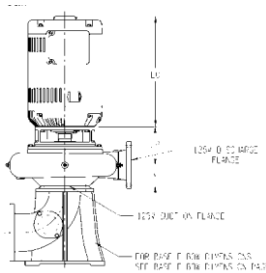


Figure 2

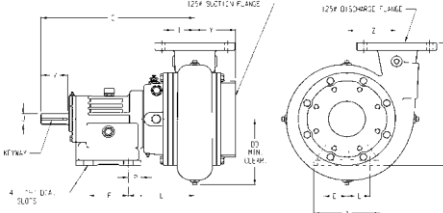


Figure 3

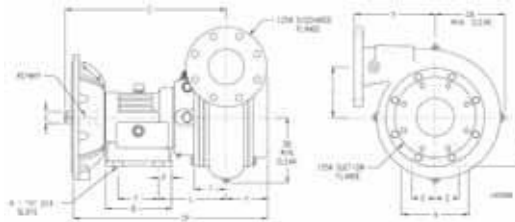
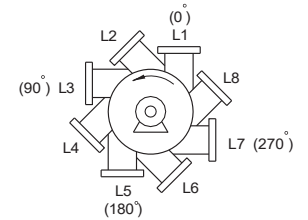
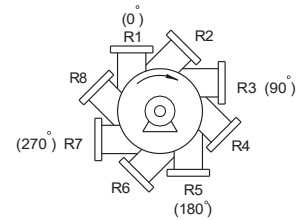


Figure 4



All configurations

## PUMP DIMENSIONS

MOUNT	Fig.	A	AR	B	C	CP	D	DA	DD	E	F	H	K	L	LP	P	R	T	U	V	X	Y	Z	KEYWAY
CC	1	-	-	-	-	-	-	-	8.19	-	-	-	-	-	5.94	-	-	2.92	-	-	9	4.62	5.62	-
VM	2	12	-	12.88	27.5	-	10.5	-	11.31	5.12	10.38	0.81	-	9.12	-	0.88	-	3.94	2.5	4.5	11	4.75	9.25	.62 X .31
F5	3	7.5	-	7.36	17.34	-	5.5	-	8.19	2.62	4.5	0.56	-	7.5	-	1.44	-	3.55	1.25	3	9	4.62	5.62	.25 X .12
EM5	4	7.5	-	7.36	17.34	21.59	5.5	8.19	7.88	2.62	4.5	0.56	-	7.5	-	1.44	14.42	3.55	1.25	-	9	4.62	5.62	.25 X .12

## CC MOTOR DIMENSIONS

MOTOR FRAME	AK DIM.	A	B	D	E	F	H	AB	BA	LC
213-5	8.5	9.5	8	5.25	4.25	7	0.41	7.94	4.5	13.69
254-6	8.5	11.25	11.25	6.25	5	10	0.53	9.5	5	17.94

## VM MOTOR DIMENSIONS

MOTOR FRAME	AK DIM.	LC	AB
213-5	8.5	13.69	7.94
254-6	8.5	17.94	9.5