

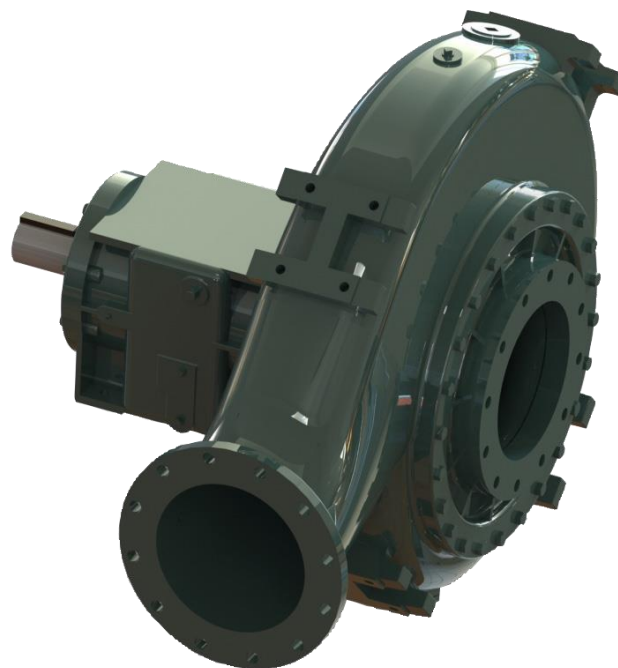
14NHG28

AVAILABLE MOUNTING CONFIGURATIONS

14NHG28-F FRAME MOUNT
 14NHG28-RP-F REDI-PRIME FRAME MOUNT
 14NHG28-EM ENGINE MOUNT
 14NHG28-RP-EM REDI-PRIME ENGINE MOUNT
 14NHG28-VF VERTICAL FRAME MOUNT

OPERATING LEVELS

MIN FLOW	3000 GPM	681 m³/h
MAX FLOW	13800 GPM	3132.6 m³/h
DISCHARGE SIZE	14"	356 mm
SUCTION SIZE	16"	406.4 mm
SOLIDS HANDLING	4.25"	10.6 cm
MAX SPEED	1200 RPM	1200 RPM
SHUT-OFF HEAD	425'	129.5 m
BEP HEAD	300'	91.5 m
BEP FLOW	11600 GPM	2633 m³/h
BEP PERCENT	85%	85%



A typical picture of the pump is shown. Please contact Kamal Blower Pump Company for further details. All information is approximate and for general guidance only.

PARTS	STANDARD MATERIAL (ALL IRON)
WEAR RING	CAST IRON ASTM A48
IMPELLER	CAST IRON ASTM A48
VOLUTE	DUCTILE IRON
SHAFT	17-4PH STAINLESS STEEL
SHAFT SLEEVE	416 STAINLESS STEEL
SUCTION COVER	CAST IRON ASTM A48
MECHANICAL SEAL	TUNGSTEN CARBIDE VS. SILICON CARBIDE
BEARING FRAME	CAST IRON ASTM A48

The 14NHG28 pump is designed with Kamal Blower's renowned quality and durability. It features a 14" discharge, 14" suction, and double volute. Kamal Blower's patented Cycloseal® design is standard, with a Type 2 single mechanical seal, stainless steel hardware and tungsten carbide vs. silicon carbide seal faces for abrasion resistance. Bearings are a heavy duty grease-lubricated ball bearings with a minimum life of 50,000 hours.

- Superior lift capability
- Robust solids handling capability
- Premium hydraulic efficiency
- Cycloseal® design mechanical seal
- Heavy-duty construction •
- RunDry™ option •
- Redi-Prime® fully automatic self-priming; dry-priming available



AGRICULTURE



FOOD



INDUSTRIAL



MINING



MUNICIPAL



OIL & GAS

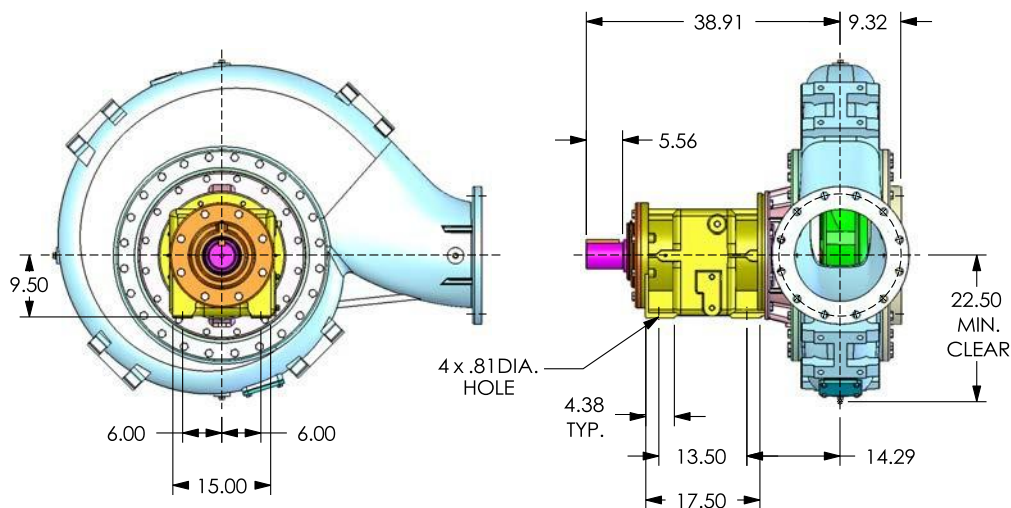


REFRIGERATION



RENTAL

14NHG28

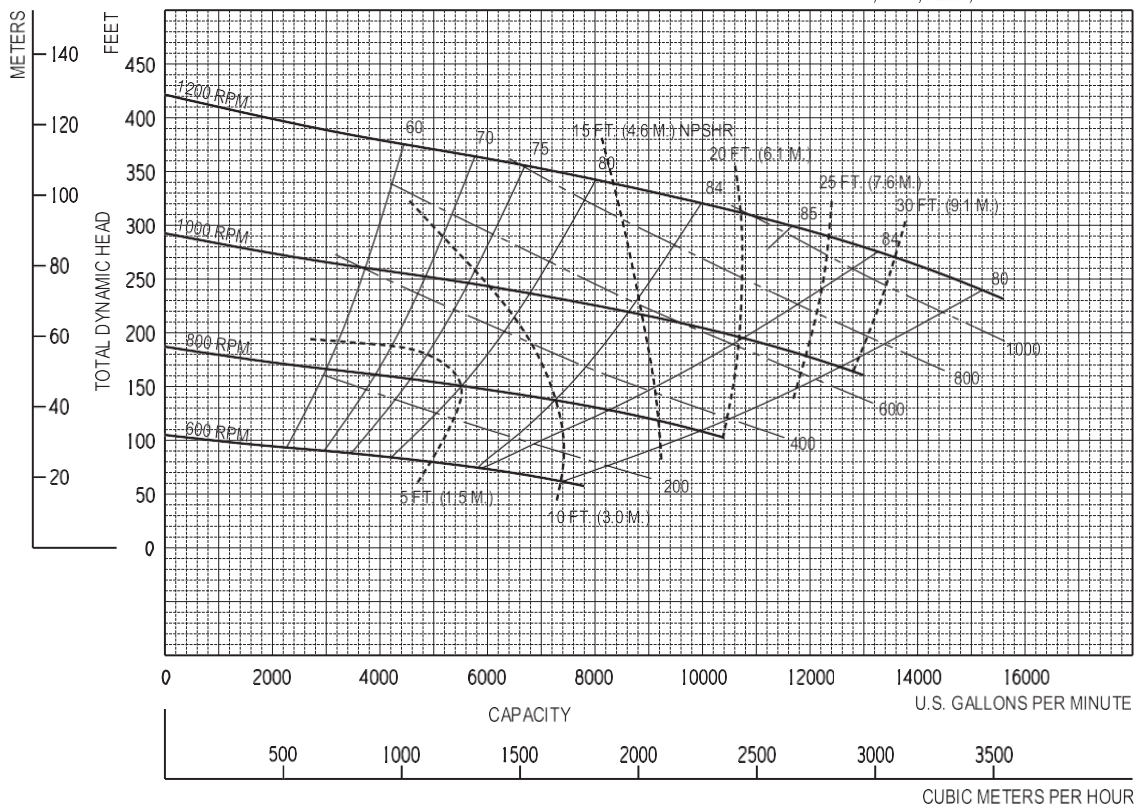


Feet x .305 = Meters
Inches x 25.4 = Millimeters
GPM x .227 = Cubic Meters/Hour
GPM x 3.785 = Liters/Minute
HP x .746 = KW

Speed	Impeller Dia.	Style	Solids Dia.	N _S	Suction	Discharge	No. vanes
VARIOUS	28"	ENCLOSED	4.25"	1800	14"	14"	3

SINGLE VOLUTE

MOUNTING CONFIG.: F, VF, EM, VC



Performances shown are for cool water, close-coupled electric configuration with Cyclo Seal®. Other mounting configurations, seal arrangements or liquids may require horsepower and/or performance adjustments.

5/02/11

KAMAL BLOWER SOLUTIONS LLC

14NHG28 - VARIOUS RPM

NEW PAGE

14NHG28VA